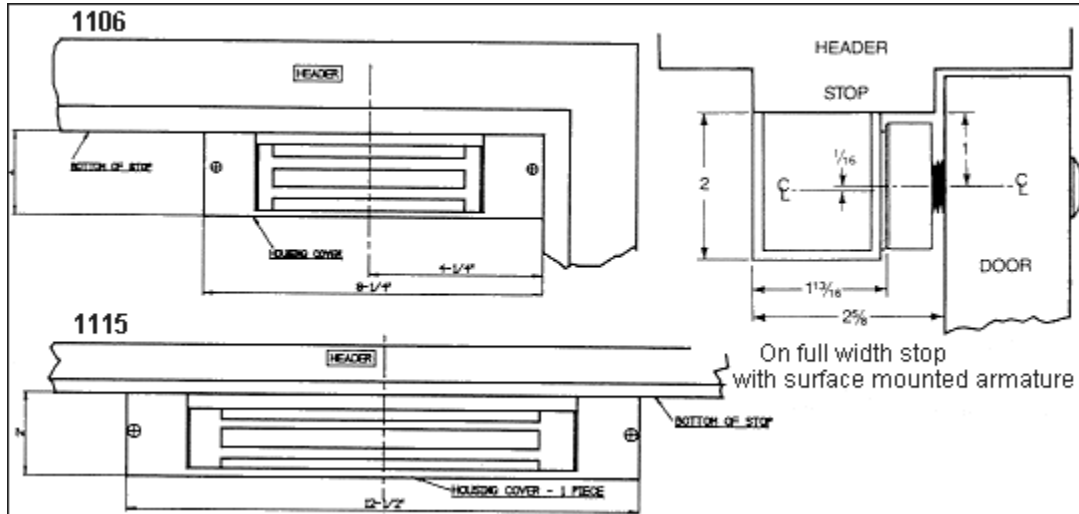


1106/1115 SERIES ELECTRO-MAGNETIC LOCKS



Specifications:

Physical Size:

1106 Housing-8-1/2"long x 2" high

x 1-13/16" deep overall

1115 Housing-12-1/2"long x 2" high

x 1-13/16" deep overall

1106/1115 Projection-2-5/8" total
depth including armature

Electrical:

Operating voltage field selectable

1106-245ma @ 24 VDC

480ma @ 12VDC 1115-290ma @ 24 VDC

580ma @ 12 VDC

In-Swinging Doors

TJ(prefix)-Top jamb mounting for in-swinging doors(includes back mount housing and Z bracket for mounting armature) See also 1190 armature mounting assembly for all glass doors.

Custom Housings

G(prefix)-Extruded housing guard lip conceals and protects armature

LV(prefix)-Extra long housing for vertical jamb mounted locks

LW(prefix)-Extra wide housing for horizontal full width mounted locks

Custom Finishes

xDBA-Dark Bronze Anodize

xGBA-Gold Bronze Anodize

xSBA-Black Satin Anodized

xUS3-Polished Brass

Factory Options:

xD=Concealed Door Position Switch

SPDT rated @ .1 amp @ 30 volts

x2D=Two Door Position Switches(as above for use with pairs of doors)

xL=Bi-polar LED recessed into end plate of housing with resistor for use with 12 or 24 VDC

xB=Dual magnetic bond sensors detect improper armature mating or lack of sufficient lock power to provide rated holding force

x2B=Two dual magnetic bond sensors(same as above for pairs of doors)

xAT=Housing enclosed adjustable(2 to 120 second) time delay with SPDT form C relay output

xR=AC to DC Rectifier concealed in housing, mounted to electromagnet(one required for each magnet if operating from AC power)

x2R=Two AC to DC Rectifiers(one per electromagnet,see above)

xCS=1/2" Rigid conduit fitting mounted in housing end plate (for use in exposed wiring conditions such as perimeter gate control)

xCT=Concealed cover tamper switch SPDT snap action actuated by removal of housing cover

xTS=Tamper resistant cover attachment screws for enhanced security

xS=Miniature piezo sounder mounted to housing provides an audible alert during alarm conditions

xUS4-Satin Brass
xUS26-Polished Chrome
xUS26D-Satin Chrome

Installation:

The elongated mounting holes on the mounting plate permit easy adjustments. Two of the four small holes behind the electro-magnet are used to secure the unit firmly in place and keep it from rotating. The other two round holes can be used should moving the magnet slightly be required later. Four point versus 2 point mounting, increases the stability and life of the installation.

A wire trough behind the electro-magnet provides a convenient channel for leads, allowing the installer to use the chamber at either end for field connections.

Lock operating voltage is field selectable to match the supply voltage. Locks are shipped ready for 24 volt DC power but can be field wired for 12 volt DC power.

The armature mounting pack, includes a specially designed shoulder screw to insure proper floating action of the lock armature at all times. The armature mounting screw can be fully tightened without affecting floating action. Roll pins furnished also allow the armature to flex while maintaining alignment.