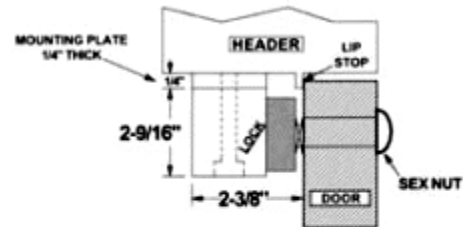
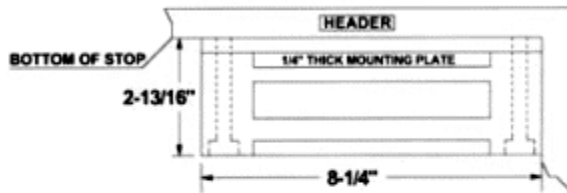
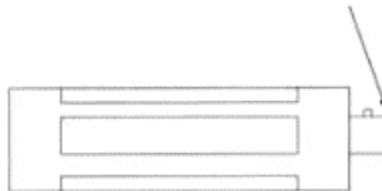


1000 SERIES ELECTRO-MAGNETIC LOCKS

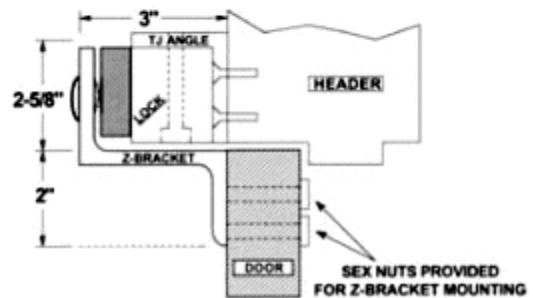
1000 FOR STANDARD OUTSWING DOOR APPLICATIONS



1000xCF OPTIONAL 3/4" FEMALE CONDUIT FITTING FOR GATE APPLICATIONS



TJ1000 STANDARD INSWING DOOR WITH Z-BRACKET & TOP JAMB ANGLE



Specifications:

Physical Size:

#1000 Lock - 8-1/4" long x 2-9/16" high x 1-1/2" deep

#1000 Armature-6-1/2" long x 2-1/4" high x 5/8" thick

#1000 Mounting Plate - 8-1/4" long x 1-1/2" wide x 1/4" thick

#1095 Top Jamb Mounting Angle-8-1/4" long x 2" x 1-1/2 x 1/4" thick

Electrical:

170ma@24 VDC

340ma@12 VDC

Options:

The xCF Conduit Fitting option is available for this lock. See # 1110 series locks for applications requiring custom finishes or other factory options.

Applications:

The 1000 series locks are supplied with a 4-conductor, 20 gauge power cable (equal to Belden #M-8444) 18" long. By the order in which these leads are connected to the DC power source, the operating voltage of the unit is determined. This allows any of these locks to be used with a 12 or 24 volt DC power supply.

Gate mounting:

1000xCF Specifies Conduit Fitting. When installing these locks on exterior swing and slide gates, # 1000xCF locks should be specified to receive units with the conduit fitting. This will afford protection to the power wiring for the lock.

In-Swinging Doors

TJ-1000 - 1000 series lock with top jamb mounting hardware.

Finish:

1000 series locks are encased in a brushed nickel plated steel housing suitable for interior or exterior applications. Electromagnet face and armature are electroless nickel plated for high resistance to rust and corrosion.

Installation:

Typically these locks are mounted on outswinging doors using the mounting plate accompanying the unit. This mounting plate has elongated slots for ease of alignment and reinforced threaded holes for secure attachment of the lock to the plate. An access hole is also provided in the mounting plate to accommodate the power cable.

The TJ-1000 units are supplied with an angular mounting plate prepared for attaching the mounting angle to the face of the door frame. A "Z" bracket is also furnished for the mounting of the armature plate to the door.